



Aquatic hazard assessment of a commercial sample of naphthenic acids



James P. Swigert^{a,*}, Carol Lee^b, Diana C.L. Wong^c, Russell White^d, Alan G. Scarlett^e, Charles E. West^e, Steven J. Rowland^e

^a EcoTox Assessments, 506 Tenant Circle, Saint Michaels, MD 21663, USA

^b ExxonMobil Biomedical Sciences, 1545 Route 22 East, Annandale, NJ 08801, USA

^c Shell Health Americas, One Shell Plaza, 910 Louisiana St, Houston, TX 77002, USA

^d American Petroleum Institute, 1220 L Street NW, Washington, DC 20005, USA

^e Biogeochemistry Research Centre, Plymouth University, Drake Circus, Plymouth PL4 8AA, UK

HIGHLIGHTS

- The 1-, 2-, 3-ring, and acyclic NAs accounted for 84% of the test sample.
- Toxicity endpoints ranged 9.0–46 mg L⁻¹ (loading rates) for four species.
- Fish (*Pimephales promelas*) was the most sensitive of the test species.
- Biomimetic extraction is consistent with a nonpolar narcosis mode of toxic action.

ARTICLE INFO

Article history:

Received 14 March 2014

Received in revised form 6 October 2014

Accepted 26 October 2014

Available online 27 November 2014

Handling Editor: Shane Snyder

Keywords:

Naphthenic acids

Aquatic toxicity

Biomimetic extraction

GC × GC–MS

ABSTRACT

This paper presents chemical composition and aquatic toxicity characteristics of a commercial sample of naphthenic acids (NAs). Naphthenic acids are derived from the refining of petroleum middle distillates and can contribute to refinery effluent toxicity. NAs are also present in oil sands process-affected water (OSPW), but differences in the NAs compositions from these sources precludes using a common aquatic toxicity dataset to represent the aquatic hazards of NAs from both origins. Our chemical characterization of a commercial sample of NAs showed it to contain in order of abundance, 1-ring > 2-ring > acyclic > 3-ring acids (~84%). Also present were monoaromatic acids (7%) and non-acids (9%, polyaromatic hydrocarbons and sulfur heterocyclic compounds). While the acyclic acids were only the third most abundant group, the five most abundant individual compounds were identified as C_{10–14} *n*-acids (*n*-decanoic acid to *n*-tetradecanoic acid). Aquatic toxicity testing of fish (*Pimephales promelas*), invertebrate (*Daphnia magna*), algae (*Pseudokirchneriella subcapitata*), and bacteria (*Vibrio fischeri*) showed *P. promelas* to be the most sensitive species with 96-h LL₅₀ = 9.0 mg L⁻¹ (LC₅₀ = 5.6 mg L⁻¹). Acute EL₅₀ values for the other species ranged 24–46 mg L⁻¹ (EC₅₀ values ranged 20–30 mg L⁻¹). Biomimetic extraction via solid-phase-microextraction (BE–SPME) suggested a nonpolar narcosis mode of toxic action for *D. magna*, *P. subcapitata*, and *V. fischeri*. The BE analysis under-predicted fish toxicity, which indicates that a specific mode of action, besides narcosis, may be a factor for fishes.

© 2014 The Authors. Published by Elsevier Ltd. This is an open access article under the CC BY-NC-SA license (<http://creativecommons.org/licenses/by-nc-sa/3.0/>).

1. Introduction

Naphthenic acids (NAs) are constituents in crude oil usually present at 0–3% (Brient et al., 1995; CEATAG, 1998). They are complex and composed predominantly of alkyl-substituted cycloaliphatic carboxylic and acyclic (paraffinic) acids. Rings may be fused or bridged, and the acyclic carboxylic acids may be straight-chain or highly branched (Rowland et al., 2011a,b,c). NAs

are assigned the general formula C_nH_{2n+2}O₂ (Clemente and Fedorak, 2005), where the value *n* represents the number of carbon atoms, and *Z* may be zero or a negative even integer, reflecting the hydrogen deficiency resulting from ring formation (Clemente and Fedorak, 2005).

NAs derived from petroleum refining have boiling points that fall within the range of middle distillate petroleum streams (e.g., kerosene, diesel) (Brient et al., 1995). They cause corrosion problems in distillation units (Brient et al., 1995; CEATAG, 1998) and can contribute to the aquatic toxicity of refinery wastewater (Dorn, 1992). Owing to their corrosive nature, NAs are removed

* Corresponding author. Tel.: +1 410 745 6172.

E-mail address: jswigert@atlanticbb.net (J.P. Swigert).

from middle distillates to improve burning qualities, storage stability, and odor of the finished fuels (Brient et al., 1995; Suarez, 1996). This removal process provides a source of crude NAs that can be further refined for use in emulsifying agents, wetting agents, anti-fungal agents, gelling agents, antioxidants, and dryers in oil-based paints (Brient et al., 1995; CEATAC, 1998). The extraction of bitumen from oil sands deposits generates oil sands process-affected water (OSPW), which can also contain 20–120 mg NAs L⁻¹ (Holowenko et al., 2002; Headley and McMartin, 2004; NRC, 2010). To our knowledge no commercial NA preparations are derived from OSPW.

NAs are considered the key constituents responsible for the aquatic toxicity of OSPW and some refinery effluents (MacKinnon and Boerger, 1986; Dorn, 1992; Verbeek et al., 1994). Due to their ready availability, commercial NAs have at times been used as a surrogate for evaluating NAs from OSPW extracts. However, significant compositional variability exists in NAs from different sources and the use of commercial NAs as surrogates for OSPW NAs has been questioned (West et al., 2011). These include differences in (i) the ranges of molecular weights of constituent NAs (Clemente et al., 2003; Lo et al., 2003), (ii) principal ring structure groups (Clemente et al., 2004; Grewer et al., 2010; Rowland et al., 2011a,b,c), and (iii) the presence of oxy-NAs in OSPW extracts (Grewer et al., 2010). Commercial NAs and OSPW extracts also demonstrated differences in aquatic toxicity. Nero et al. (2006) reported that at equal NAs concentrations, commercial NAs were more toxic to yellow perch than OSPW extracts, and Peters et al. (2007) demonstrated in two fish species that commercial NAs showed lower thresholds for body deformities and growth reductions than OSPW extracts.

Since commercial NAs are transported throughout the world, an accurate hazard assessment of these substances and their potential effects on the aquatic environment is important. Early studies of the aquatic hazard of commercial NAs have limited value due to incomplete compositional and exposure concentration analysis. Additionally, compositional differences between OSPW extracts and commercial NAs may prevent a single aquatic hazard dataset from representing NAs from all sources (West et al., 2011). Therefore, the Petroleum HPV Testing Group conducted testing under the US EPA (1996) High Production Volume (HPV) Challenge Program to evaluate aquatic hazard of a commercial sample of NAs with a comprehensive compositional analysis. The present study provides aquatic toxicity data for a commercial NAs sample to four species representing fish, invertebrates, algae, and bacteria. Various tools were used to assess the composition of the commercial NAs sample and to investigate a potential mode of toxic action of these NA substances. A detailed chemical analysis of the NAs test substance helped progress the knowledge of specific NA structures in commercial NAs samples. Biomimetic extraction–solid phase microextraction (BE–SPME) analyses were used to evaluate mode of action, and those measurements served as a surrogate for critical body burdens of these substances. These new data are anticipated to provide an aquatic hazard assessment that may be used in a regulatory context for risk assessment purposes.

2. Methods and materials

2.1. Test substance

The sample of commercial naphthenic acids (CAS# 1338-24-5) was supplied by Merichem Company (Houston, TX). Manufacturer's specification data for the test sample provided the following: acid number, 235 mg KOH gm⁻¹; total unsaponifiables, 4.9%; viscosity at 40 °C, 32 cst; specific gravity at 20 °C, 0.969 g mL⁻¹;

color (Garner), 4.5 GI; water content, 0.07%; phenolic content (acid), 0.31%; total sulfur, 0.34%; CP – flash point (COC), 343 °F.

The test substance was used to prepare all test solutions, matrix spiking solutions and analytical standards. Quantification of the carbon numbers (C-num) and Z-family groups were performed by the Department of Biological Sciences, University of Alberta (Alberta, Saskatchewan) using published methods (Holowenko et al., 2002).

2.2. Test organisms and test design

Toxicity tests were conducted using a freshwater fish (fathead minnow, *Pimephales promelas*), an invertebrate (Cladoceran, *Daphnia magna*), an alga (*Pseudokirchneriella subcapitata*), and a bacterium, (*Vibrio fischeri*). Fish, invertebrate, and alga tests were performed following standard regulatory guidelines (US EPA, 1996, guidelines 850.1010, 850.1075, 850.5400; OECD, 2009, guidelines 201, 202, 203) and additional guidance (OECD, 2000) for testing mixtures using water accommodated fractions (WAF). The term WAF refers to the fraction of multicomponent substances that is dissolved and/or present in the water phase as a stable dispersion (OECD, 2000). To create each WAF, an amount of test substance was added to dilution medium on a weight/volume basis. Solutions were stirred using a Teflon-coated magnetic stir bar for approximately 24 h at a speed sufficient to create a vortex extending 30–50% of the solution depth. Solutions were allowed to settle for approximately 1 h after stirring, and the WAF was collected from the bottom of the stir vessel to avoid any undissolved test substance. Nominal concentrations were referred to as the loading rate of test substance from which the WAFs were created. A discussion and rationale for use of the term loading rate has been previously presented (Girling et al., 1992; OECD, 2000). The Microtox bacteria toxicity test was based on the general principles described by ISO (2007). Bacterial luminescence readings were measured using a Microtox Model 500 Analyzer (Modern Water Inc.). A summary of the test conditions are shown in Table 1. Fish, invertebrates, and algae were obtained from in-house cultures maintained by the testing facility. Freeze-dried *V. fischeri* were purchased (Modern Water, Inc). Dilution water used in the fish and *Daphnia* tests was laboratory freshwater prepared to yield a total hardness of 130–160 mg L⁻¹ as CaCO₃. Water pH ranged 8.0–8.4, 6.8–8.9, and 7.5–8.6 in the fish, algae, and *Daphnia* tests, respectively (Table 1). Dilution water used in the alga test was freshwater algal nutrient medium (ASTM, 1997), and Microtox diluent was used for the bacterial toxicity test.

2.3. Analytical characterization of naphthenic acids test substance

The test substance was characterized for Z-family and carbon number distributions using the gas chromatography–mass spectrometry (GC–MS) method described by Young et al. (2008). An aliquot of the test substance was derivatized with N-methyl-N-(t-butyldimethylsilyl)-trifluoroacetamide (MTBSTFA) to create t-butyldimethylsilyl esters of the constituent NAs. The extracted ion current chromatograms of selected M-57 ions for different carbon number (n) and Z number NAs were integrated. Those data were put into a Microsoft Excel spreadsheet (Holowenko et al., 2002) to create a table of the relative abundances of each NA group corresponding to the general formula, C_nH_{2n+2}O₂. This defined, approximately, the relative proportions of acyclic, 1-, 2-, 3-ring, etc. and aromatic NA classes (Fig. 1). It is known that this method may overestimate some NA classes if oxy-NAs (e.g. hydroxy 'O₃' acids (Bataineh et al., 2006)) or 'O₄' diacids (Lengger et al., 2013), which may yield bis-derivatives, are present, as is common in OSPW NAs. However the proportions of such O₃ and O₄ species

Table 1
Test design parameters.

	<i>P. promelas</i>	<i>P. subcapitata</i>	<i>D. magna</i>	<i>V. fischeri</i>
Test type	96-h semi-static; 24-h renewal interval	96-h static	48-h semi-static; 24-h renewal interval	15-min static
System	3.8-L jars, 2.0 L WAF	250-mL flasks, 100 mL WAF	250-mL glass jars, 200 mL WAF	Microtox cuvettes, 0.9 mL solution
Replicates/no. of organisms	1/7 juvenile fish	7/10 ⁴ cells mL ⁻¹	4/5 < 24 h old	1/approximately 1 × 10 ⁶ cells
Loading rates, mg NAs L ⁻¹	0 (control), 1.3, 2.5, 5.0, 10, 20	0 (control), 2.5, 5.0, 10, 20, 40, 80	0 (control), 5.0, 10, 20, 40, 80	0 (control), 6.3, 13, 25, 50, 100 ^a
Sampling for dissolved NA measurements (FTIR analysis)	Fresh WAF, 0 and 72 h; Old WAF, 24 and 96 h	Fresh WAF, 0 h; Old WAF, 96 h	Fresh WAF – 0 and 24 h; Old WAF 24 and 48 h	Not analyzed
Other conditions				
Photoperiod	16 h light/8 h dark	Continuous, 4300 lux	16 h light/8 h dark	Ambient
Temperature, °C	22 ± 1 °C	24 ± 2 °C	20 ± 2 °C	15 °C
pH (range, SU)	8.0–8.4	6.8–8.9	7.5–8.6	
Other		Shaken at 100 rpm		
Test endpoint	Mortality, %	Inhibition of growth rate, % ^b	Immobility, %	Inhibition of luminescence, %

^a Exposure solutions used for Microtox were dilutions of a stock WAF. Concentrations assume total dissolution of the NAs test substance.

^b Calculations of average specific growth rates, percent inhibition, and E₁L/E₁C₅₀ values followed OECD 201 guidelines.

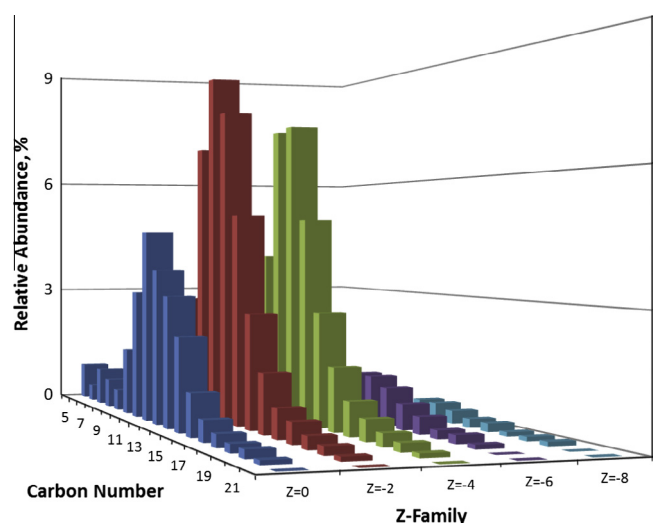


Fig. 1. GC–MS analysis of the distribution of carbon numbers and Z families of NAs in the commercial NAs sample. The columns represent the percentage (by number of ions) of NAs in the sample that account for a given carbon number of a given Z family (corresponding to a specific *m/z*). The sum of all columns equals 100%. The structures shown are specific examples only of individual members of each class which were identified by 2D GC–MS as shown in Figs. 2 and 3.

in commercial NAs samples are generally low (Grewer et al., 2010), so the present method is adequate for purpose.

Identification of selected NA compounds in the test substance employed comprehensive two-dimensional gas chromatography/time-of-flight mass spectrometry (2D GC/ToF-MS) (Rowland et al., 2011c). Naphthenic acids were derivatized to methyl esters and analyzed using an Agilent 7890A gas chromatograph (Agilent Technologies, Wilmington, DE, USA) fitted with a Zoex ZX2 GC × GC cryogenic modulator (Houston, TX, USA) interfaced with a Almsco Bench ToF dx™ time-of-flight mass spectrometer (Almsco International, Lantrisant, UK).

Isolation of the mono-aromatic acids as a group from the total NAs was achieved using argentation solid-phase extraction (SPE) of the methyl esters on silica with hexane and hexane:diethyl ether eluants (Jones et al., 2012). Separation of the *n*-paraffinic acids (*n*-acids) from the highly branched *iso*-paraffinic (*iso*-acids) and cyclic acids employed the method of urea adduction (Speight, 2007). Each experiment was repeated three times.

2.4. Quantitation of total dissolved naphthenic acids in water samples and distribution of Z-family and carbon number groups

Concentrations of dissolved naphthenic acids in the exposure solutions used in fish, *Daphnia*, and algal toxicity tests were measured using Fourier transform infrared spectroscopy (FTIR) (Jivraj et al., 1991). Exposure solutions used in the Microtox test were not analyzed.

Analyses of the proportional abundance of the different Z-family and C-number distributions were made of each initial WAF used in the fish, *Daphnia*, and algal toxicity tests (Merlin et al., 2007). Derivatization and analysis was followed as described for the NAs test substance.

2.5. Biomimetic extraction–solid phase microextraction analysis (BE–SPME)

The BE–SPME method was developed as a tool to estimate total body residues in biota after exposure to organic chemicals (Van Loon et al., 1997). It is based on the principle that the SPME–water partition coefficients correlate well with octanol–water and membrane–water partition coefficients and provide a good surrogate for lipid partitioning (Verbruggen et al., 2000).

A linear relationship between NAs loading rate and SPME was established at NAs loading rates of 0 (control), 2.1, 4.7, 10.3, 22.7, and 50 mg L⁻¹. Except for the control, samples were acidified to pH ≤ 2 with concentrated HCl. An additional sample of the 50 mg L⁻¹ treatment was similarly taken in VOA vials but not acidified. A 30 μm PDMS (0.132 μL) SPME fiber (Supelco) was equilibrated with each sample for 100 min at 30 °C with orbital agitation at 250 rpm. A single SPME fiber was used for all automated sample analyses. The SPME fiber along with hydrocarbon calibration standards diluted in solvent were analyzed on a Perkin–Elmer Autosystem XL gas chromatograph with a flame ionization detector and 15 m × 0.53 mm id capillary column with 1.5 μm Rtx-1 stationary phase (Restek). The molar response factor of 2,3-dimethylnaphthalene was used for converting the observed GC-FID response to nanomoles (nM) of organic constituents on the PDMS fiber. The three levels of 2,3-dimethylnaphthalene standards corresponded to approximately 0.064, 0.32 and 0.95 nM on-column. Fiber results were normalized to the volume of PDMS and reported as micromoles (μM) as 2,3-dimethylnaphthalene mL⁻¹ PDMS. The quantitation limit was approximately 0.5 μM as 2,3-dimethylnaphthalene mL⁻¹.

2.6. Statistical analyses

All statistical analyses were performed using SAS statistical software (SAS, 2004). Results of the fish, *Daphnia*, and algal toxicity tests were reported on the basis of WAF loading rates (LL_{50}/EL_{50}) and as measured dissolved NAs concentrations (LC_{50}/EC_{50}). Point estimates of the 50% effect levels (LL_{50}/EL_{50} and LC_{50}/EC_{50}) in the fish and *Daphnia* tests were determined using either the probit or trimmed Spearman-Kärber methods. When the *P* value for Goodness of Fit was >0.05 the probit method was selected for reporting. Alternatively, the Trimmed Spearman-Kärber method was selected. The no-observed-effect concentrations (NOEC) and loading rates (NOELR) were determined either by using a Fisher's exact test or by the absence of lethality or abnormal effects. A Hochberg adjustment was used in the Fisher's test to control the experimental error rate at 0.05.

The algal test endpoints (E_rC_{50}/E_rL_{50} values) were determined based on the inhibition of the average specific growth rate for a 96-h exposure. Growth data were evaluated for normality and homogeneity of variance using Shapiro–Wilk's and Levene's tests, respectively. Determination of the NOELR and NOEC values was made using a non-parametric analysis of variance (SAS Proc GLM) when transformation of the growth data failed to correct for non-normality.

3. Results and discussion

3.1. Test substance compositional characteristics

3.1.1. GC–MS analysis

GC–MS analysis of Z-family and carbon number groups (*n*) revealed the test sample to be dominated by one (39%) and two

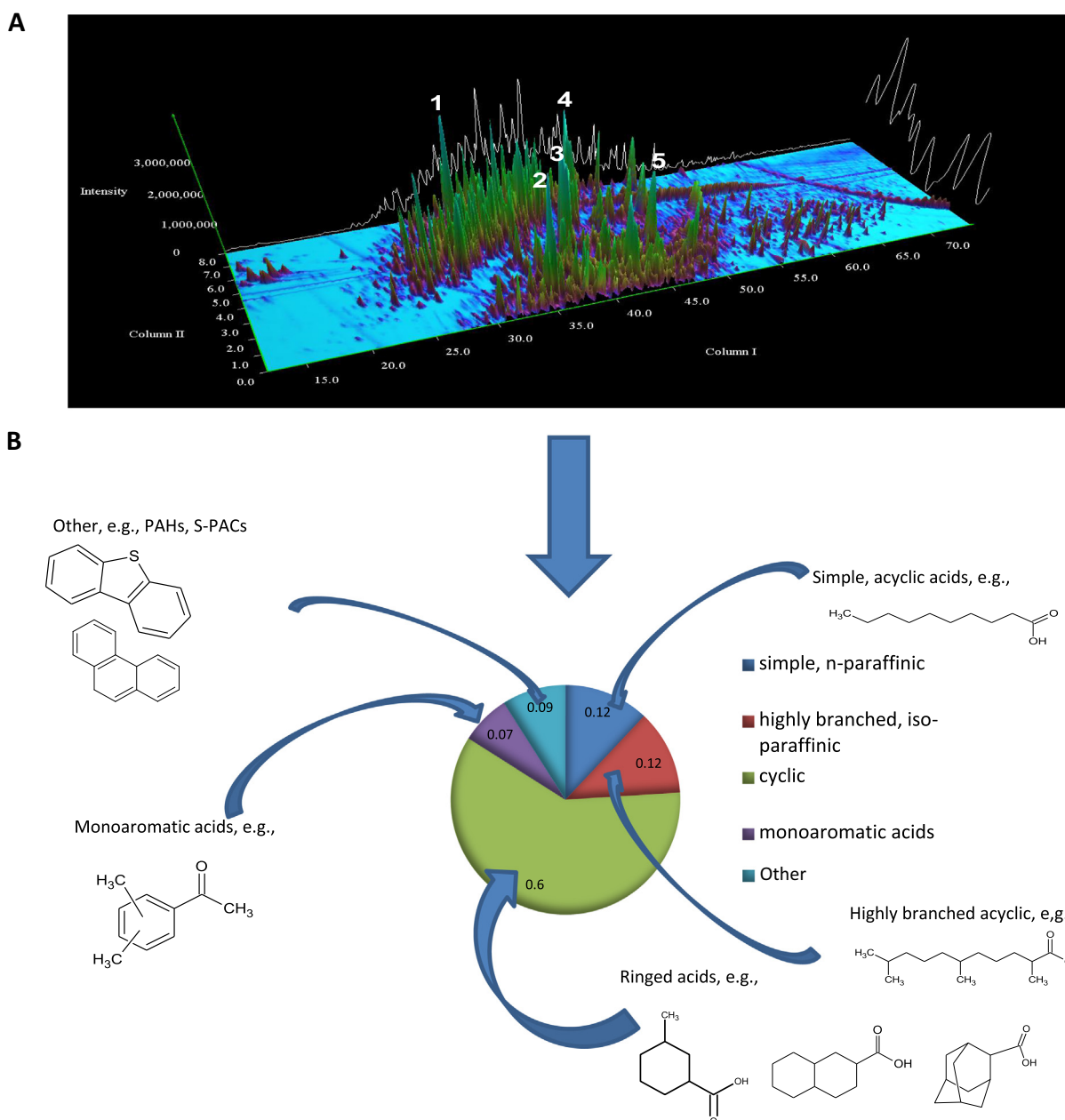


Fig. 2. Total ion current chromatogram showing the 5 most abundant acids in the NAs test sample (A). A breakdown of the test sample shows component groups and their estimated proportional abundance (B).

(30%) ring NAs (Fig. 1). Acyclic NAs were the third most abundant group (24%). NAs containing 3, 4, or 5 rings accounted for only 5%, 2%, and <1%, respectively. Among the Z-family groups the frequency distributions of NA compounds were approximately bell-shaped with peak NA abundances occurring for compounds having 12 or 13 carbon atoms.

This pattern of carbon number and Z-family distributions is similar to that reported for other commercial NAs samples from this supplier (Grewer et al., 2010). However, commercial NAs samples from other suppliers may not have the same distribution of constituents. Grewer et al. (2010) showed that NAs samples from two other commercial sources contained 80% and 15% acyclic, 8% and 46% 1-ring, and 8% and 33% 2-ring constituents, respectively. Scott et al. (2005) obtained unreliable analytical measurements using standards made from one commercial source when measuring aqueous concentrations of NAs of other commercial substances. The principal similarity among all the commercial NAs samples was the low percentage of NAs with three or more rings. This contrasts with that of OSPW extracts, which were shown to contain NAs with a wider range of molecular weight constituents and higher proportions having 3 or more rings (Holowenko et al., 2002; Scott et al., 2005; Grewer et al., 2010).

3.1.2. 2D GC/ToF-MS analysis

The GC–MS method employed to construct the Z-family and carbon number distributions does not discriminate individual NAs. Shown in Fig. 2A is a 2D GC/ToF-MS total ion current chromatogram of the test sample. Unlike conventional GC–MS in which individual NA are rarely resolved, and instead display as an unresolved complex mixture or ‘hump’, the 2D GC method employing an ionic liquid stationary phase in the first GC column, produced a chromatogram in which the presence of approximately 2000 components composed of non-aromatic (e.g. acyclic and alicyclic) NAs, aromatic NAs, and non-acids were revealed. Peaks labeled 1–5 in Fig. 2A are the five most abundant components in the NAs test substance as measured by peak height. These were tentatively identified as methyl esters of C10 through C14 *n*-acids (*n*-decanoic to *n*-tetradecanoic) from interpretation of the mass spectra and comparison with National Institute of Standards and Technology (NIST) library mass spectra. The existence of *n*-acids in commercial NAs has only been reported once previously (Rowland et al., 2011c). These and similar acyclic (*Z* = 0) acids constituted part of the 24% of the acids derivatized by MTBSTFA and measured by the GC–MS method (Figs. 1 and 2B).

Combining all sources of analytical data (i.e., GC–MS, argentation SPE, and urea adduction) made it possible to assign approximate percentages to the abundance of various groups of compounds in the NAs (Fig. 2B). GC–MS of the urea-adducted fraction showed a predominance of *n*-acids ranging from C₉ nonanoic to C₁₈ octadecanoic acids, with minor amounts of methyl and ethyl-branched acids. This fraction was estimated to be 12% of the total (i.e. half of the 24%) *Z* = 0 acyclic acids (Fig. 2B). The non-adducted fraction (72%) consisted of polymethyl-branched acyclic acids plus the 1-, 2-, and 3-ringed acids (Fig. 2B). The GC–MS analysis of Z-family and carbon numbered groups revealed 24% acyclic structures; therefore, 12% existed as simply branched and *n*-acids, 12% as polymethyl-branched acids, while all ringed acids totaled 60%. Argentation SPE determined the monoaromatic acids totaled 7%. The remaining portion (9%) comprised a variety of non-acids and uncharacterized material. Manufacturer's data showed that small amounts of phenols acids were present (0.31%) as identified in other commercial NAs (West et al., 2011). GC–MS analysis of this fraction showed it also contained unknown proportions of polyaromatic hydrocarbons and heterocyclic compounds.

In addition to the five most abundant acids, 15 additional NAs representing *z* = 0, –2, –3, –4, –6, and –8 classes of acids were similarly identified against library matches, commercially available standards, or laboratory-prepared compounds. Fig. 3 shows representatives of highly branched acyclic, cyclohexyl, decalin, and adamantane acids and the standard matches tentatively identified in the NAs sample. No tetracyclic NAs were identified.

3.2. Aquatic toxicity tests

Table 2 presents the concentration–response data for each toxicity test and the test endpoints determined on the basis of loading rates (LL₅₀/EL₅₀) and mean measured NAs concentrations (LC₅₀/EC₅₀). All tests met the acceptability criteria specified in the test guidelines.

Few aquatic toxicity studies of commercial NAs have reported simultaneous quantitative measurements of the dissolved NAs in the test solutions. Previous reports of aquatic toxicity tests of commercial NAs are difficult to compare to our data owing to the lack of details of the experimental methods or descriptions of the chemical composition of the test substances (Cairns et al., 1965; Dokholyan and Magomedov, 1984). In general, exposure solutions were prepared on a nominal basis using dilutions of a stock solution. In the few studies that reported measured concentrations of NAs in solution, relatively low analytical recoveries were reported (Peters et al., 2007; Young et al., 2011). Our studies show that exposure solutions prepared using the WAF technique produced consistent concentrations that were stable over time. The coefficient of variability (CV%) of measured NAs within the WAFs ranged from 1% to 14%.

The fish acute toxicity endpoint reported here (fathead minnow 96-h LL₅₀ = 9.0 mg L^{–1}, LC₅₀ = 5.6 mg L^{–1}) is lower than the range reported by Dokholyan and Magomedov (1984) for five species of fish exposed to sodium naphthenate (LC_{50s} ranged 25–75 mg L^{–1}). Those authors did not measure the exposure concentrations and differences in toxicity may be due to biological (fish species, age/size factors) or chemical factors (water pH, NAs composition). Of studies based on measured NAs concentrations, Nero et al. (2006) reported for perch a 96-h LC₁₀₀ of 3.6 mg L^{–1} using a commercial NAs sample, and Scarlett et al. (2013) reported LC_{50s} for zebrafish larvae of 13.1 mg L^{–1} and 8.1 mg L^{–1}, respectively, for non-aromatic and aromatic NAs fractions of OSPW extracts. Both studies support an LC₅₀ substantially lower than those reported by Dokholyan and Magomedov (1984). The toxicity of commercial NAs sample has not been reported previously for *D. magna* and *P. subcapitata*, and test endpoints reflected a similar sensitivity for these two species. Rapid toxicity screening using Microtox has increasingly been used to assess the relative toxicity of OSPW extracts (Holowenko et al., 2002; Frank et al., 2008) and individual NA compounds (Frank et al., 2009; Jones et al., 2011). However, the application of this assay to a commercial NAs sample has not been reported previously.

Polar narcosis has been suggested as the likely mode of action (MOA) for acute toxicity of NAs based on their suspected structures and surfactant nature (Frank et al., 2009, 2010), but more work needs to be done. It has been recognized for a homologous series of narcotic chemicals that an increase in toxicity is observed with increasing chain length or molecular weight (van Wezel and Opperhuizen, 1995). This has been described mathematically in plots of Log LC₅₀ vs lipophilicity (generally correlated to Log Kow; Veith et al., 1983). This relationship is observed until the solubility of the chemical limits its bioavailability. At this solubility cut-off, there is insufficient chemical in the dissolved phase to cause toxicity. Jones et al. (2011) demonstrated this effect for the toxicity of a variety of NA structures (e.g., acyclic, 1-, 2-, 3-ring,

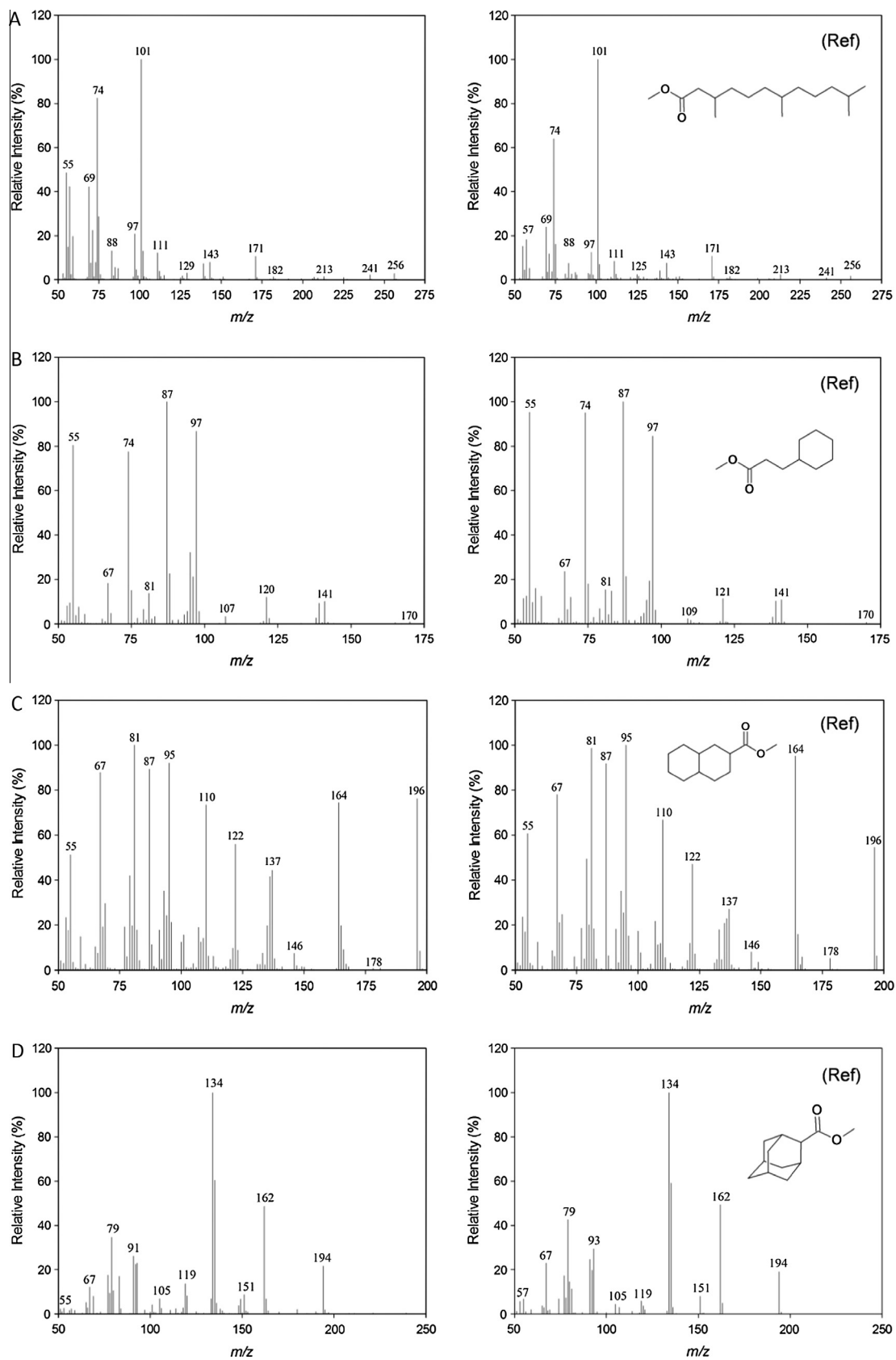


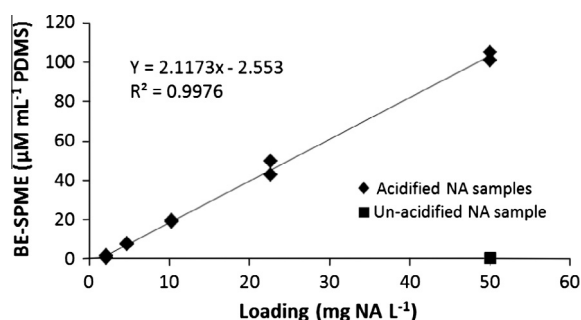
Fig. 3. 2D GC–MS mass spectra of methyl esters of unknowns and spectra of reference compounds (Ref) showing identifications for 3,7,11-trimethyldodecanoic acid (A), cyclohexyl-3-propanoic acid (B), decalin-2-carboxylic acid (C), and adamantane-2-carboxylic acid (D) as further examples of acyclic (24%) and mono- to tricyclic (60%) acids.

Table 2

Exposure–response data and toxicity test endpoints (95% confidence intervals).

<i>P. promelas</i>			<i>D. magna</i>			<i>P. subcapitata</i>			<i>V. fischeri</i>	
Loading rate (mg L ⁻¹)	Mean measured NA (mg L ⁻¹)	Percent response ^a	Loading rate (mg L ⁻¹)	Mean measured NA (mg L ⁻¹)	Percent response ^b	Loading rate (mg L ⁻¹)	Mean measured NA (mg L ⁻¹)	Percent response ^c	Nominal concentration (mg L ⁻¹)	Percent response ^d
0 (control)	ND	14	0 (control)	ND	5	0 (control)	ND	–	0 (control)	
1.3	0.90	0	5.0	3.9	0	2.5	1.6	1	6.3	12
2.5	2.1	0	10	7.7	0	5.0	3.5	1	13	18
5.0	3.2	14	20	17	25	10	7.4	1	25	32
10	6.0	57	40	33	100	20	15	7	50	48
20	14	100	80	69	100	40	28	39	100	74
						80	45	97		
96-h LL ₅₀ = 9.0 mg L ⁻¹ (6.6–12 mg L ⁻¹)			48-h EL ₅₀ = 24 mg L ⁻¹ (21–27 mg L ⁻¹)			96-h E _r L ₅₀ = 43 mg L ⁻¹ (42–45 mg L ⁻¹)			15-min EC ₅₀ = 46 mg L ⁻¹ (33–63 mg L ⁻¹)	
96-h LC ₅₀ = 5.6 mg L ⁻¹ (2.5–10 mg L ⁻¹)			48-h EC ₅₀ = 20 mg L ⁻¹ (17–23 mg L ⁻¹)			96-h E _r C ₅₀ = 30 mg L ⁻¹ (29–31 mg L ⁻¹)				

ND = not detected.

^a Mortality.^b Immobilization.^c Inhibition of growth rate.^d Photoluminescence.**Fig. 4.** Relationship between NAs loading and BE-SPME of acidified water. Results of un-acidified duplicate samples at 50 mg L⁻¹ are included.

monoaromatic). Solubility cut-offs for toxicity to *V. fischeri* generally occurred at C15, depending on the NA group.

The NAs responsible for toxicity in these mixtures and their MOA are uncertain, and require further investigation. Recent research on MOA appears to be consistent with polar narcosis (Redman et al., 2012), while others proposed a mechanism of action based on the spectrum of observed metabolic and histopathological effects. These include disruption of processes associated with energy metabolism and hepatic glycolysis in anuran tadpoles (Melvin et al., 2013), developmental changes in fish during embryogenesis (Peters et al., 2007), and gill alterations in adult fish (Nero et al., 2006). Biodegradation studies of OSPW and their

extracts showing reduced toxicity with biodegradation of the low molecular weight NAs constituents imply toxicity is attributed to the low molecular weight fractions (MacKinnon and Boerger, 1986; Lai et al., 1996; Clemente et al., 2004). Toxicity assessments of OSPW extracts fractionated into molecular weight groups also seemed to align more with the correlative studies ascribing toxicity to the lower molecular weight NAs (Frank et al., 2008).

3.3. Biomimetic extraction–solid phase microextraction

Fig. 4 presents the BE–SPME analyses of acidified water samples prepared at loading rates of 2.1, 4.7, 10.3, 22.7, and 50 mg NAs L⁻¹. The relationship between loading and the measured BE–SPME was linear within the range of loading rates used in the toxicity tests ($y = 2.1173x - 2.553$; $r^2 = 0.9976$). Comparison of the BE–SPME results for the 50 mg L⁻¹ sample, with and without acidification showed the importance of the neutral form of the naphthenic acids to maximize extraction. The acidified 50 mg L⁻¹ sample yielded a mean BE of 103 $\mu\text{M mL}^{-1}$ PDMS while the corresponding non-acidified sample resulted in a BE concentration of 0.40 $\mu\text{M mL}^{-1}$ PDMS, which was slightly below the detection limit (0.5 $\mu\text{M mL}^{-1}$ PDMS).

The mathematical relationship fitting BE concentrations to the toxicity test loading rates and the predicted BE concentrations corresponding to the LL₅₀/EL₅₀ endpoints are reported in Table 3. Based on the results of the mathematical regression, the BE concentrations equivalent to the LL₅₀/EL₅₀ endpoints for *P. promelas*, *D. magna*, *P. subcapitata*, and *V. fischeri* are 16.5, 48.3, 88.5, and 63.1 $\mu\text{M mL}^{-1}$ PDMS, respectively.

Table 3BE–SPME concentrations for toxicity test loading rates and predicted critical fiber (C_{fiber}) concentrations for test endpoints.

<i>P. promelas</i>		<i>D. magna</i>		<i>P. subcapitata</i>		<i>V. fischeri</i>	
Nominal loading (mg L ⁻¹)	Calculated BE–SPME ($\mu\text{M mL}^{-1}$ PDMS)	Nominal loading (mg L ⁻¹)	Calculated BE–SPME ($\mu\text{M mL}^{-1}$ PDMS)	Nominal loading (mg L ⁻¹)	Calculated BE–SPME ($\mu\text{M mL}^{-1}$ PDMS)	Nominal conc. (mg L ⁻¹)	Calculated BE–SPME ($\mu\text{M mL}^{-1}$ PDMS)
1.3	0.20	5	8.03	2.5	2.74	6.3	10.79
2.5	2.74	10	18.62	5	8.03	12.5	23.91
5	8.03	20	39.79	10	18.62	25	50.38
10	18.62	40	82.14	20	39.79	50	103.31
20	39.79	80	166.83	40	82.14	100	209.18
				80	166.83		
96-h LL ₅₀ = 9.0 C _{fiber} ^a = 16.5		48-h EL ₅₀ = 24 C _{fiber} = 48.3		96-h E _r L ₅₀ = 43 C _{fiber} = 88.5		15-min EC ₅₀ = 46 C _{fiber} = 93.9	

^a The C_{fiber} concentration represents the predicted concentration of organic constituents normalized to 2,3-dimethylnaphthalene that partitioned to the PDMS fiber at the toxicity endpoint.

The BE–SPME technique was used as a means to compare toxicity test results on the basis of system exposure (i.e., lipid uptake) rather than on external water concentrations. BE–SPME fiber concentrations in the range of approximately 40–80 $\mu\text{M mL}^{-1}$ PDMS correspond to a 50% acute effect in aquatic organisms attributable to non-polar narcosis for petroleum hydrocarbon mixtures (Parkerton et al., 2000). In this study, the BE analyses fit reasonably well for *D. magna*, *P. subcapitata*, and *V. fischeri* in that the critical C_{fiber} concentrations were 48.3, 88.5, and 93.9 $\mu\text{M mL}^{-1}$ PDMS, suggesting a narcosis mode of action. The LL_{50} value for fish was 9.0 mg L^{-1} , with a correlating C_{fiber} concentration of 16.5 $\mu\text{M mL}^{-1}$ PDMS, and indicates that a specific MOA besides narcosis may be a factor in fish toxicity. Nero et al. (2006) identified reduced gill surface area in fish exposed to acutely toxic NAs concentrations, and suggested this may have consequences for gas exchange and NA uptake.

4. Conclusions

The chemical composition of the classes and of the individual acids of a commercial sample of NAs was obtained by a combination of GC–MS and 2D GC–MS methods using an ionic liquid GC stationary phase. The data revealed a predominance of 1- and 2-ringed acids (39% and 30%, respectively). Acyclic acids constituted the third most abundant group (24%), and C10 through C14 *n*-acids were the five most abundant individual acids in the sample. Examples of individual acids identified included acyclic, 1- to 3-ring and monoaromatic acids as well as some non-acids. The test sample was most toxic to fish, while to invertebrates (*D. magna*), algae (*P. subcapitata*), and bacteria (*V. fischeri*) were less sensitive. Assessing acute aquatic toxicity using BE–SPME was consistent with a polar narcosis MOA for the invertebrate, algae, and bacteria, while that for fish may also include altered gill function.

Acknowledgements

This project was sponsored and funded by the Petroleum HPV Testing Group (PHPVTG), an unincorporated group of manufacturers affiliated by contractual obligation to fund a voluntary data disclosure and toxicity testing program on certain petroleum-related chemical substances in response to EPA's HPV Challenge Program. The American Petroleum Institute (API) manages the PHPVTG's activities. We acknowledge the assistance of Paula Podhasky, API; Dr. Phillip Fedorak, University of Alberta, (GC–MS analyses); and Dan Letinski and Tricia Knarr-Cousineau, ExxonMobil Biomedical Sciences, Inc., (BE–SPME analyses and Microtox testing, respectively). Funding of the GC \times GC–MS instrumentation used in this research was provided by an Advanced Investigators Grant (No. 228149) awarded to SJR for project OUTREACH, by the European Research Council, to whom we are also extremely grateful.

References

- ASTM (American Society for Testing and Materials), 1997. Standard Guide for Conducting Static 96-h Toxicity Tests with Microalgae, Melvin E1218–97a. West Conshohocken, PA.
- Bataineh, M., Scott, A.C., Fedorak, P.M., Martin, J.W., 2006. Capillary HPLC/QTOF-MS for characterizing complex naphthenic acid mixtures and their microbial transformation. *Anal. Chem.* 78, 8354–8361.
- Brient, J.A., Wessner, P.J., Doyle, M.N., 1995. Naphthenic acids, fourth ed. Kirk-Othmer Encyclopedia of Chemical Technology, vol. 16 John Wiley & Sons, Inc., New York, pp. 1017–1029.
- Cairns Jr., J., Scheier, A., Loos, J.J., 1965. A comparison of the sensitivity to certain chemicals of adult zebra danios *Brachydanio rerio* (Hamilton-Buchanan) and zebra danio eggs with that of adult bluegill sunfish *Lepomis macrochirus* Raf. *Notulae Naturae* 381, 1–9.
- CEATAG (CONRAD Environmental Aquatics Technical Advisory Group), 1998. Naphthenic Acids Background Information Discussion Report. Alberta Department of Energy, Edmonton, Alberta, Canada.
- Clemente, J.S., Fedorak, P.M., 2005. A review of the occurrence, analyses, toxicity, and biodegradation of naphthenic acids. *Chemosphere* 60, 585–600.
- Clemente, J.S., Prasad, N.G.N., MacKinnon, M.D., Fedorak, P.M., 2003. A statistical comparison of naphthenic acids characterized by gas chromatography–mass spectrometry. *Chemosphere* 50, 1265–1274.
- Clemente, J.S., MacKinnon, M.D., Fedorak, P.M., 2004. Aerobic biodegradation of two commercial naphthenic acids preparations. *Environ. Sci. Technol.* 38, 1009–1016.
- Dokholyan, B.K., Magomedov, A.K., 1984. Effect of sodium naphthenate on survival and some physiological-biochemical parameters of some fishes. *J. Ichthyol.* 23, 125–132.
- Dorn, P.B., 1992. Chapter 6: case histories – the petroleum refining industry. In: Ford, D.L. (Ed.), *Toxicity Reduction Evaluation and Control*, Water Quality Management Library, vol. 3. Technomic Publications, Lancaster, Pennsylvania, pp. 183–223.
- Frank, R.A., Kavanagh, R., Burnison, B.K., Arsenault, G., Headley, J.V., Peru, K.M., Van Der Kraak, G., Solomon, K.R., 2008. Toxicity assessment of collected fractions from an extracted naphthenic acid mixture. *Chemosphere* 72, 1309–1314.
- Frank, R.A., Fischer, K., Kavanagh, R., Burnison, B.K., Arsenault, G., Headley, J.V., Peru, K.M., Van Der Kraak, G., Solomon, K.R., 2009. Effect of carboxylic acid content on the acute toxicity of oil sands naphthenic acids. *Environ. Sci. Technol.* 43, 266–271.
- Frank, R.A., Sanderson, H., Kavanagh, R., Burnison, B.K., Headley, J.V., Solomon, K.R., 2010. Use of (quantitative) structure–activity relationship [(Q)SAR] model to predict the toxicity of naphthenic acids. *J. Toxicol. Environ. Health Part A* 73, 319–329.
- Girling, A.E., Markarian, R.K., Bennett, D., 1992. Aquatic toxicity testing of oil products – some recommendations. *Chemosphere* 24, 1469–1472.
- Grewer, D.M., Young, R.F., Whittall, R.M., Fedorak, P.M., 2010. Naphthenic acids and other acid-extractables in water samples from Alberta: what is being measured? *Sci. Total Environ.* 408, 5997–6010.
- Headley, J.V., McMartin, D.W., 2004. A review of the occurrence and fate of naphthenic acids in aquatic environments. *J. Environ. Sci. Health, Part A* 39, 1989–2010.
- Holowenko, F.M., MacKinnon, M.D., Fedorak, P.M., 2002. Characterization of naphthenic acids in oil sands wastewaters by gas chromatography–mass spectrometry. *Wat. Res.* 36, 2843–2855.
- ISO (International Organization for Standardization), 2007. ISO 11348-3:2007, Water Quality – Determination of the Inhibitory Effect of Water Samples on the Light Emission of *Vibrio fischeri* (Luminescent Bacteria Test) – Part 3: Method using Freeze-dried Bacteria. ISO, Geneva, Switzerland.
- Jivraj, M.N., MacKinnon, M.D., Fung, B., 1991. Naphthenic Acid Extraction and Quantitative Analysis with FT-IR Spectroscopy. Syncrude Canada Ltd., Research Department, Edmonton, AB. September 1991.
- Jones, D., Scarlett, A.G., West, C.E., Rowland, S.J., 2011. Toxicity of individual naphthenic acids to *Vibrio fischeri*. *Environ. Sci. Technol.* 45, 9776–9782.
- Jones, D., West, C.E., Scarlett, A.G., Frank, R.A., Rowland, S.J., 2012. Isolation and estimation of the aromatic naphthenic acid content of an oil sands process-affected water extract. *J. Chromatogr. A* 1247, 171–175.
- Lai, J.W.S., Pinto, L.J., Kiehlmann, E., Bendell-Young, L.I., Moore, M.M., 1996. Factors that affect the degradation of naphthenic acids in oil sands wastewater by indigenous microbial communities. *Environ. Toxicol. Chem.* 15, 1482–1491.
- Lengger, S.K., Scarlett, A.G., West, C.E., Rowland, S.J., 2013. Diamondoid diacids ('O4' species) in oil sands process-affected water. *Rapid Comm. Mass Spectrom.* 27, 2648–2654. <http://dx.doi.org/10.1002/rcm.6729>.
- Lo, C.C., Brownlee, B.G., Bunce, N.J., 2003. Electrospray-mass spectrometric analysis of reference carboxylic acids and Athabasca oil sands naphthenic acids. *Anal. Chem.* 75, 6394–6400.
- MacKinnon, M.D., Boerger, H., 1986. Description of two treatment methods for detoxifying oil sands tailings pond water. *Water Poll. Res. J. Canada* 21, 496–512.
- Melvin, S.D., Lancot, C.M., Craig, P.M., Moon, T.W., Peru, K.M., Headley, J.V., Trudeau, V.L., 2013. Effects of naphthenic acid exposure on development and liver metabolic processes in anuran tadpoles. *Environ. Pollut.* 177, 22–27.
- Merlin, M., Guidard, S.E., Fedorak, P.M., 2007. Detecting naphthenic acids in waters by gas chromatography–mass spectrometry. *J. Chromatogr. A* 1140, 225–229.
- Nero, V., Farwell, A., Lee, L.E.J., Van Meer, T., MacKinnon, M.D., Dixon, D.G., 2006. The effects of salinity on naphthenic acid toxicity to yellow perch: gill and liver morphology. *Ecotoxicol. Environ. Safety* 65, 252–264.
- NRC (Natural Resources Canada, CanmetENERGY), 2010. Oil sands water toxicity: A critical review. In: Miskimn, B., Fedorak, P., Lauman, R., Vinke, K. (Eds.), Report No. 2010-089 (INT), Devon, Alberta, Canada.
- OECD (Organization for Economic Cooperation and Development), 2000. Guidance document on aquatic toxicity testing of difficult substances and mixtures. OECD Series on Testing and Assessment No. 23, ENV/JM/MONO (2000), vol. 6. OECD, Paris, France.
- OECD (Organization for Economic Cooperation and Development), 2009. OECD Guidelines for the Testing of Chemicals, Section 2: Effects on Biotic Systems. OECD, Paris, France.
- Parkerton, T.F., Stone, M.A., Letinski, D.J., 2000. Assessing the aquatic toxicity of complex hydrocarbon mixtures using solid phase microextraction. *Toxicol. Lett.* 14, 273–282.
- Peters, L.E., MacKinnon, M., Van Meer, T., van den Heuvel, M.R., Dixon, D.G., 2007. Effects of oil sands process-affected waters and naphthenic acids on yellow perch (*Perca flavescens*) and Japanese medaka (*Orizias latipes*) embryonic development. *Chemosphere* 67, 2177–2183.
- Redman, A.D., Parkerton, T.F., Letinski, D.J., Bragin, G.E., Manning, R.J., Knarr, T., Kelley, B.A., Lee, C., 2012. Aquatic Toxicity of Naphthenic Acids: Modeling and Alternative Test Methods. SETAC, Long Beach, CA.

- Rowland, S.J., Scarlett, A.G., Jones, D., West, C.E., Frank, R.A., 2011a. Diamonds in the rough: identification of individual naphthenic acids in oil sands process water. *Environ. Sci. Technol.* 45, 3154.
- Rowland, S.J., West, C.E., Scarlett, A.G., Jones, D., Frank, R.A., 2011b. Identification of individual tetra- and pentacyclic naphthenic acids in oil sands process water by comprehensive two-dimensional gas chromatography/mass spectrometry. *Rapid Commun. Mass Spectrom.* 25, 1198–1204.
- Rowland, S.J., West, C.E., Scarlett, A.G., Jones, D., 2011c. Identification of individual acids in a commercial sample of naphthenic acids from petroleum by two-dimensional comprehensive gas chromatography/mass spectrometry. *Rapid Commun. Mass Spectrom.* 25, 1741–1751.
- SAS Institute Inc., 2004. SAS Proprietary Software V9.1. SAS Institute Inc., Cary, NC.
- Scarlett, A.G., Reinardy, H.C., Henry, T.B., West, C.E., Frank, R.A., Hewitt, L.M., Rowland, S.J., 2013. Acute toxicity of aromatic and non-aromatic fractions of naphthenic acids extracted from oil sands process-affected water to larval zebrafish. *Chemosphere*. <http://dx.doi.org/10.1016/j.chemosphere.2013.05.020>.
- Scott, A.C., Mackinnon, M.D., Fedorak, P.M., 2005. Naphthenic acids in Athabasca oil sands tailings waters are less biodegradable than commercial naphthenic acids. *Environ. Sci. Technol.* 39, 8388–8394.
- Speight, J.G., 2007. *The Chemistry and Technology of Petroleum*, fourth ed. CRC Press, Taylor and Francis Group, Florida, USA.
- Suarez, F.J., 1996. Pluses and minuses of caustic treating. *Hydrocarbon Process.*
- United States Environmental Protection Agency (US EPA), 1996. Series 850, Ecological Effects Test Guidelines. US EPA, Washington, DC. <<http://www.epa.gov/ocspp/pubs/frs/home/guidelin.htm>>.
- Van Loon, W.M.G.M., Verwoerd, M.E., Wijnker, F.G., van Leeuwen, C.J., Duyn, P.V., deGuchte, C.V., Hermens, J.L.M., 1997. Estimating total body residues and baseline toxicity of complex organic mixtures in effluents and surface waters. *Environ. Toxicol. Chem.* 16, 1358–1365.
- Van Wezel, A.P., Opperhuizen, A., 1995. Narcosis due to environmental pollutants in aquatic organisms: residue-based toxicity, mechanisms, and membrane burdens. *Critical. Rev. Toxicol.* 25, 255–279.
- Veith, G.D., Call, D.J., Brooke, L.T., 1983. Structure-toxicity relationships for the fathead minnow, *Pimephales promelas*: Narcotic industrial chemicals. *Can. J. Fish. Aquat. Sci.* 40, 743–748.
- Verbeek, A.G., Mackay, W.C., MacKinnon, M.D., 1994. A toxicity assessment of oil sands wastewater: a toxic balance. *Can. Tech. Rep. Fish. Aquat. Sci.* 1989, 196–207.
- Verbruggen, E.M.J., Vaes, W.H.J., Parkerton, T.F., Hermens, J.L.M., 2000. Polyacrylate-coated SPME fibers as a tool to simulate body residues and target concentrations of complex organic mixtures for estimation of baseline toxicity. *Environ. Sci. Technol.* 34, 324–331.
- West, C.E., Jones, D., Scarlett, A.G., Rowland, S.J., 2011. Compositional heterogeneity may limit the usefulness of some commercial naphthenic acids for toxicity assays. *Sci. Total Environ.* 409, 4125–4131.
- Young, R.F., Wismer, W.V., Fedorak, P.M., 2008. Estimating naphthenic acids in laboratory-exposed fish and in fish from the wild. *Chemosphere* 73, 498–505.
- Young, R.F., Michel, L.M., Fedorak, P.M., 2011. Distribution of naphthenic acids in tissues of laboratory-exposed fish and in wild fishes from near the Athabasca oils sands in Alberta, Canada. *Ecotoxicol. Environ. Safety* 74, 889–896.